

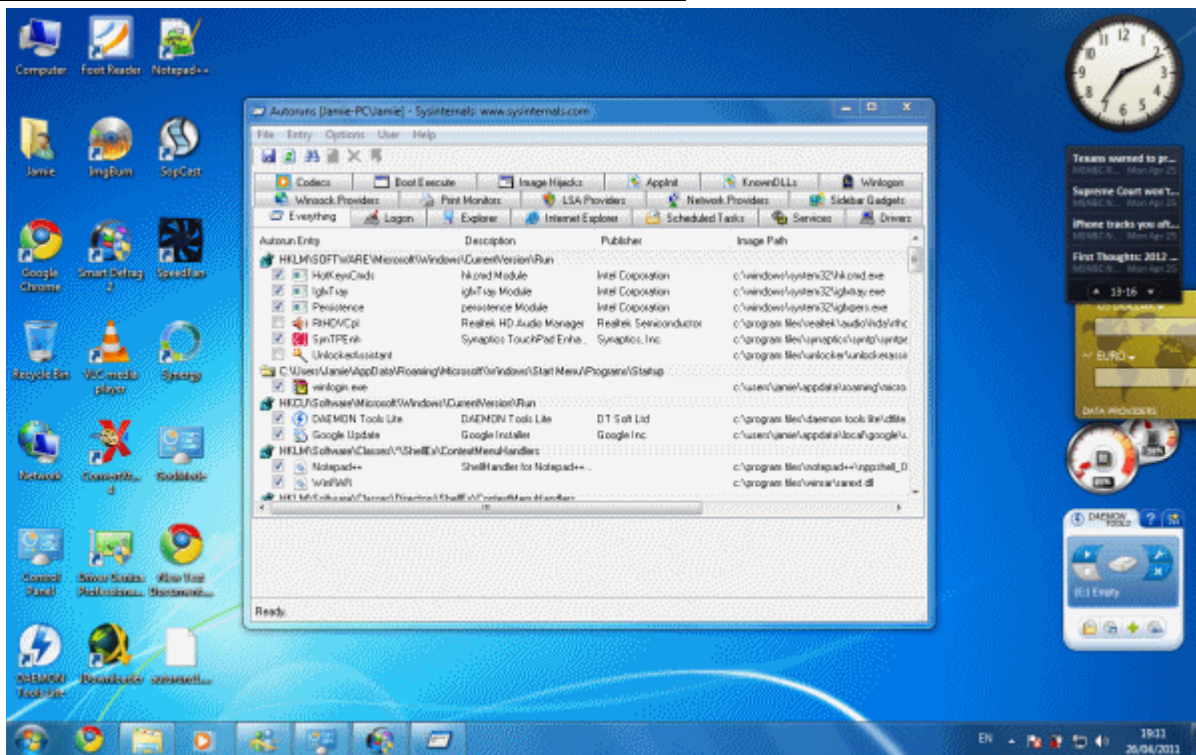
Analyze all Autorun / Auto-start programs in Windows

Your Windows operating system loads all kinds of programs and code automatically in many different ways. You know this already from just witnessing applications start-up and appear when you boot into Windows, particularly in the system tray on the Windows task bar. You might even have used Microsoft's built in **msconfig** to disable programs from running with Windows.



While knowing how to do this can help to stop resource-consuming programs from slowing down your boot (or once in a while help you to stop malicious software from running), it is far from perfect. The msconfig solution does not even scratch the surface and therefore we need a better alternative to be more effective at dictating what can load with, or within Windows automatically. The best alternative is regarded by many as [Autoruns](#) from Sysinternals.

What is Autoruns and where do I get it?



Sysinternals's Autoruns is available for free online for Windows.

- **Autoruns for Windows:** [Download Autoruns for Windows \(x86, x64\)](#)
- **Sysinternals Suite:** [Download full Sysinternals Suite for Windows](#) (Autoruns is included.)

Autoruns is a free utility developed by Sysinternals that quickly analyzes a Windows system to find programs that are set to automatically start on Windows boot or what extensions load into Windows processes such as Internet Explorer, and more. It covers the most common areas for malware to hide from detection, and so can be a powerful manual malware attacking tool. It can also be used to reduce the number of auto-start programs to increase system performance.

Autoruns needs to be run with Administrative privileges to make necessary changes. To do this, right click on autoruns.exe and click **Run as Administrator** (or **Run As** in Windows XP, choose an account with full Admin rights). For most Windows XP Admin accounts on personal computers, you won't need to do this, but you will in most cases if running Windows Vista or 7.